

Preserving life's most cherished moments

Capture Bead
Keepsakes



Handcrafted flower inclusion jewelry, rosaries, and keepsakes made from your special flowers.

Necklaces

These stunning sterling silver pendants in Traditional Capture Bead show off your flowers in vibrant color. Each pendant comes on an 18-inch sterling silver box chain with a 2-inch extender.



Jeanie
Bead Cage
NJBC1
Measures
0.5" x 1" long

Tree of Life
NTOL1
Measures
1" diameter



Pennye
Heart
NPH1
Measures
0.5" x 0.75"
long



Elizabeth
Heart
NSHE1
Measures
0.75" x 0.5"
long



Samantha
NSM2
Measures
0.75" diameter



Josephine
Cross
NJC1
Measures
0.75" x
1.5" long



Butterfly
Pendant
NBP1
Measures
0.5" x 0.75"
long



Dea
Bead Pendant
NDB1
Measures
0.75" long



Emma Round
Sterling Silver
Filigree
Necklace
NERF1
Measures
0.75" diameter



Angel
Pendant
NAP1
Measures
0.6" x 0.7" long

Stainless Steel Paul Crosses

The Paul Cross can be made in Traditional Capture Bead or Captured Clear.
Each necklace comes on an 18" stainless steel rolo chain with a 2" extender.



Stainless Steel Paul Cross in Captured Clear
NCPICC
Measures 2" long

Stainless Steel Paul Cross in Traditional Capture Bead
NCPITCB
Measures 2" long

Stainless Steel Memory Lockets

These beautiful Memory Lockets come filled with tiny round and disk shaped Traditional Capture Beads, and crystal briolettes. Each necklace comes on an 18" stainless steel rolo chain with a 2" extender.



Memory Locket Heart
MLHRT1
Measures 1" long



Memory Locket Round
MLRND1
Measures 1.5" long

Sterling Silver Rings in Captured Clear



Nikee Ring
RNCCI

Available in sizes 5 - 9

Audrey Ring
RACCI

Available in sizes 5 - 9

Wendy Ring
RWCCI

Available in sizes 5 - 9

(enlarged for detail)

Necklaces

Choose Traditional Capture Bead or Captured Clear



Betty Pendant
with
Cubic Zirconia

NBPI-TCB
Measures 1" long



NBPI-CC



Marsha Pendant

NMB1-TCB



NMB1-CC
Measures 1" long

Shirley Bead Pendant



NSBI-TCB



NSBI-CC
Measures 0.5" long

Dolores Pendant



NDPI-TCB
Measures 1.75" diameter



NDPI-CC

Olivia Heart Pendant



NOHP1-TCB
Measures 0.75" long



NOHP1-CC



Elise Pendant
with
Cubic Zirconia



NEPI-CC

NEPI-TCB
Measures 1" long

Regan Heart Pendant
with Cubic Zirconia
"I love you for always and
forever"



NRHP1-TCB
Measures 0.75" long



NRHP1-CC

Gracie Cross Pendant



NGC1-TCB

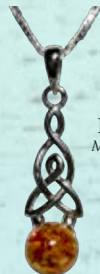


NGC1-CC
Measures 1.25" long

Cathy Pendant



NCP1-TCB



NCP1-CC
Measures 1" long

Each pendant comes on an 18-inch sterling silver box chain with a 2-inch extender.

Necklaces in Captured Clear



Carlie Globe
Pendant
NCG1
Measures 5/8"

Eileen Teardrop
Pendant
NET1



*Measures
1.25" x 0.65"*

Cascading Hearts
Necklace
NCH1



*Measures
0.5" x 0.5"*

Pillar of Hope
Pendant
NPOH1



Measures 0.33" x 1.25"

Pillar of Love
Pendant
NPOL1



Measures 0.33" x 1.25"

Infinity Necklace
NIN1



Measures 0.25" x 0.75"

Bracelets



Allie Heart Bracelet
BAHI

This stainless steel heart bracelet features your flowers in Captured Clear.



Infinity Bracelet
BIBC
Sterling silver bracelet in
Captured Clear.

Margie Bracelet
BMG1



This sterling silver adjustable bolo bracelet is elegant in its simplicity with a single Captured Clear Bead.

Bolo Curve Bracelet
BCB2



Choose the Filigree Heart Charm or the Tree of Life Charm to complete your bracelet.



Filigree Heart Charm
FHC

Tree of Life Charm
- TOL



Jane Bracelet
BJN2

This beautiful bracelet is made up of alternating Capture Beads and tear drop crystals



Caroline Bolo
Bracelet
BCARI

Starring your special flowers in graduated Traditional Capture Beads, this sterling silver adjustable bolo bracelet is perfect with any outfit.



McKinley Bracelet
BMck2

Features two sizes of Capture Beads interspersed with rose beads and small silver beads.



Beaded Charm Bracelet
with Cross Charm
BBC1



Kennedy Catherine
Bracelet
BKC1

Each Capture Bead is embellished with silver oxidized bead caps and Briolette crystals.



Madison Bracelet
BMN2

Alternating styles of Capture Beads separated by delicate chain links.

Our average beaded bracelet measures 7.5 - 8 inches and can be customized to fit you perfectly. Please indicate your size on the order form.

Sterling Silver Contemporary Charms



Small
CC2-S

Medium
CC2-M

Large
CC2-L

Jumbo
CC2-J

Captured Clear
CC2-CC

Contemporary Charms are handcrafted with a sterling silver core and fit the popular charm bracelet systems. Choose from Traditional Capture Beads or Captured Clear Beads. (Bracelet not included)

Traditional Charms easily attach to any charm bracelet or necklace with its sterling silver lobster clasp.



Traditional Charm
TC2

Stainless Steel and Leather Bracelets



Sierra Single Bead
Cord Bracelet
BSSC



Ben Hand Knotted
Bracelet
BHKB

Gerry Curve
Stainless Steel
Bracelet
BSSG1
Measures 9"



William Hand Knotted
Bracelet
BHKW

Our hand knotted bracelets feature our waterproof Captured Clear Beads and stainless steel accents. They are adjustable and can be made to fit any size wrist. All styles are available in your choice of leather, waxed cotton, or synthetic cord.



Megan Oval
Cord Bracelet
BMOC



James Bracelet
BSSLJ
Measures 8 3/4"

Tyler Bracelet
BSSLT
Measures 8 1/2"



Pocket Stones

Our Traditional Capture Bead pocket stones can be left smooth or embossed with a single large initial or up to 4 small letters.



Pocket Stone
PS2

Measures Approximately
1.5 inches

Captured Clear Heart Shaped Pocket Stones



CCHSPS1

These Captured Clear resin pocket stones show off your flower petals beautifully. Measures approximately 1.25 x 1.25 inches



Heart Shaped
Pocket Stone
HSPS1

Measures Approximately
1.75 x 1.75 inches



CCHSPS1

Caroline Pin
CLP1

Measures Approximately
2 x 1 inch



Denny Golf Repair Tools

This useful divot repair tool has a removeable ball marker featuring your flowers in either Traditional Capture Bead or Captured Clear, and it can clip to your belt.

Denny Golf Tool
in Traditional
Capture Bead
DGTTCB1

Measures
3 1/4" x 2 1/8"



Denny Golf Tool
in Captured Clear
DGTTCC1

Measures
3 1/4" x 2 1/8"

Timothy Pocket Knife - TPK1
This handsome slip joint folder has a high polished 440C flat ground blade.

Measures
Open - 5.875" long
Closed - 3.375" long

Judith
Bookmark
JBM2

Mechanical
Pencil
MP1

Russell Letter
Opener
RLO1

Cuff Links
CFSS1

Also available in Captured Clear
CFSS1CC

Twist Pen
TP1

Stylus Pen
SP1

Lincoln Money Clip
in Captured Clear
LMC1-CC

Lincoln Money Clip
in Traditional
Capture Bead
LMC1-TCB

Measures 1" x 2"

Tie Tack, Tie Bar, Cuff Links,
and Lincoln Money Clip
These stainless steel gifts are a wonderful way for a gentleman to preserve a memory.

Sterling Silver Earrings



Debbie
EDD1

Open Filigree
Heart
EOFH1



Carlie Globe
ECG1



Jessica
in Captured
Clear
EJESS-CC



Suzanne
Hearts
ESH1



Tree of Life
ETOL1



Jessica
in Traditional
Capture Bead
EJESS-TCB



Samantha
ESM2



Mary-Gen
EMG1-TCB



Lucy
EL1



Shirley Bead Posts
ES1

Kathleen Swirl
EKS1



Eileen Teardrops
EET1

Key Rings



Secret
Compartment
Key Fob

SCKF2

This clever key fob has a secret compartment for matches, toothpicks, or a little emergency cash. Available in 24kt gold plate, or brushed silver hardware.



Round
Key Ring
KRR1

Double Heart
Key Ring



KRDH1

Gus Bottle Opener Key Ring



KRGBO1

This handy bottle opener has both form and function. Made of solid brass, and measures 3" long.

Initial Key Fobs

Captured Clear Initial
Fobs
CCIF1
each letter measures 1.625" tall



These beautiful initials have a stainless steel clasp that makes it perfect to adorn your purse or backpack.



Miraculous
Medal
KF2-MM



Bar Cross
KF2-BC



Crystal
Heart
KF2-SH

Matthew Hand
Knotted Key Fob

Our Matthew Hand Knotted Key Fob features stainless steel hardware and a single large Captured Clear bead or Traditional Capture Bead.



MHKKF
-CC

MHKKF
-TCB

Sun Catchers and Ornaments



Spire Snowflake
SFS1
Measures 3"



Diamond Snowflake
SFD1
Measures 3"



Snowflake Sun
Catcher
SSC2
Measures 4"

Clara Sun
Catcher
CSC1
Measures 3"



Mary Sun
Catcher
MSC2
Measures 3.5"



George Sun Catcher
GSC2
Measures 3.5"



Joan Teardrop
Ornament
in Traditional
Capture Bead
TOJTCB1
Measures
3.25" x 2.125"



Joan Teardrop
Ornament in
Captured Clear
Resin
TOJCC1
Measures
3.25" x 2.125"



Judy Globe Ornament
JGO1
Measures 3"
Half Sphere

Wall Crosses

Floral Resin
Wall Cross
FRC1
Measures 5" x 3"



Celtic Wall Cross
with
Teardrop Dangle
CCWD1
Measures 5" x 3"

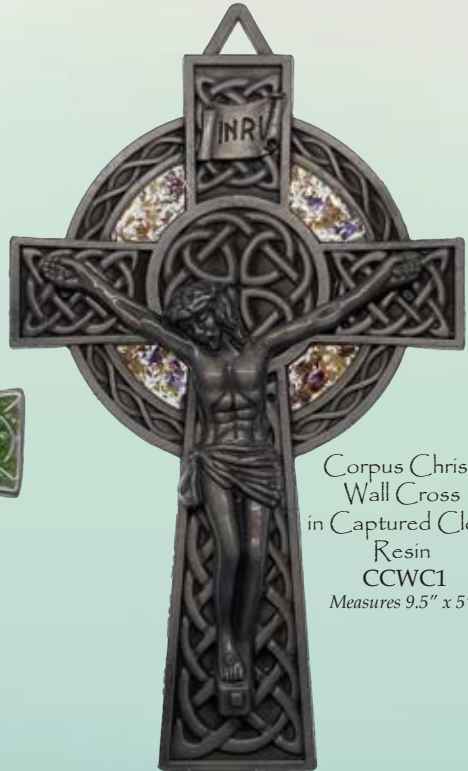


Optional Heart Dangle for the
Celtic Wall Cross
CCWHD1
Measures 5" x 3"

Celtic Wall Cross in
Traditional Capture
Bead
CCTCB1
Measures 5" x 3"



Corpus Christi
Wall Cross
in Captured Clear
Resin
CCWC1
Measures 9.5" x 5"



Visor Clips



St. Christopher
Visor Clip
SCVCI
Measures 2" x 3"

These visor clips for your car feature St. Christopher, the patron saint of travelers, and a Guardian Angel each backed with your Capture Bead flowers.



Guardian Angel
Visor Clip Single
VCGA1
Measures 2"



St. Christopher
Visor Clip Single
VCSCI
Measures 2"

Captured Clear Rosary and Chaplet



Captured
Clear
Full Rosary
FRCCI

The Captured Clear Full Rosary and Chaplet are beautiful and durable keepsakes. Your flower beads are strung and hand knotted on nylon rosary cord and accented by stainless steel beads. They feature a St. Michael defeating Lucifer centerpiece and a rugged cucifix of nails.



Captured
Clear
Chaplet
CCCI

Rosary Bracelet

RB1

The Rosary Bracelet allows you to wear your faith on your wrist. Made with one full decade, one Our Father bead, and one Glory Be bead, and finished with an oxidized silver miraculous medal and a five-way medal.



Rosary
Bracelet
RB1

Chaplet

C1

This is an abbreviated version of the Full Rosary. It is crafted with fifteen beads, a five-way medal, and a miraculous medal center. As with the Full Rosary, up to three colors can be used in its creation.



Chaplet
C1

Full Rosary

FR2

The traditional Full Rosary features silver caps on each bead.

Rosaries can be made with one color or with up to three colors. If more than one color is selected, please let us know if you would like your beads marbled or alternating solid color beads.



Full Rosary
FR2



Pocket Rosary

PR1

Our Pocket
Rosary

is a one decade rosary that can be conveniently carried with you. 1-1/2 inches in height.

At Capture Bead Keepsakes, it is our mission to capture a moment in time and allow you to hold it in your hand.

Through personal experience, we understand how cherished your flowers are and the meaning behind them.

As your flowers arrive, the petals are carefully dried, processed and mixed with other ingredients, allowing us to make a durable, water resistant keepsake. Then each piece is lovingly formed, cured, and finished. Our designers then carefully handcraft your beautiful keepsake. The transformation from flower to keepsake has many steps. Our typical turn around time is approximately 8-10 weeks but may vary depending on the volume of orders received. Your patience during this process is greatly appreciated.

However you come to own a Capture Bead Keepsake, it is our hope that the beads bring you fond memories of the person or occasion for which it was created.

We appreciate you and are honored to create your memorial keepsakes.

Thank you for supporting our small business!

Dana Kerry & Kathy

Handmade with pride in the U.S.A.